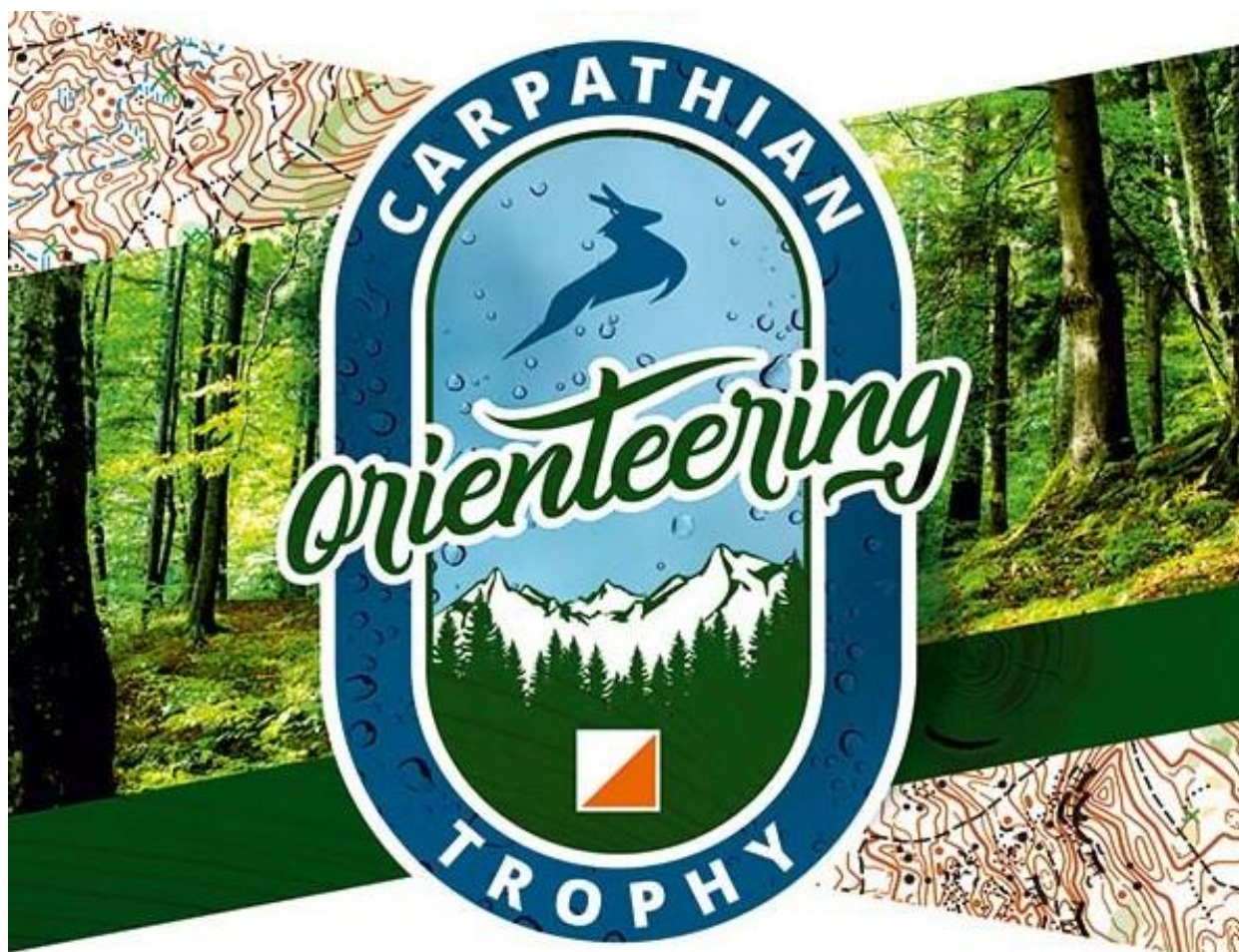


# 5 ORIENTEERING DAYS in ROMANIA

2025, August 20<sup>th</sup> – 24<sup>th</sup>



## BULLETIN 2

### Romanian National Championships

MD, LD, Relay, Urban Sprint

### Carpathian Orienteering Trophy

Overall 3 WRE stages:

MD, LD, Urban Sprint

Classes: M,W12,14,16,18,20,21E,21A,35,40,45,50,55,  
60,65,70,75, M80, Open Th., Open, Open Family

### Breaza Town Cup Urban Sprint

Competition for the students from Breaza

Classes: M,W15, M,W19



T  
A  
L  
E  
A



# CONTENTS

1. Organizing Team .....	3
2. Our Hosts .....	5
3. Our Sponsors.....	5
4. Event Program .....	6
5. Details for Event Stages .....	7
✚ Model Event, August 20 <sup>th</sup> & 21 <sup>st</sup> , Comarnic.....	7
✚ MD, WRE, August 21 <sup>st</sup> , Talea.....	8
✚ LD, WRE, August 22 <sup>nd</sup> , Talea.....	8
✚ Relay & MD, August 23 <sup>rd</sup> , Comarnic .....	8
✚ Urban Sprint, WRE, August 24 <sup>th</sup> , Breaza .....	9
6. Technical data.....	10
7. Entries, entry fees, deadlines, information.....	12
8. Welcome to Romania (to reach the competition area, accommodation, touristic tours).....	13

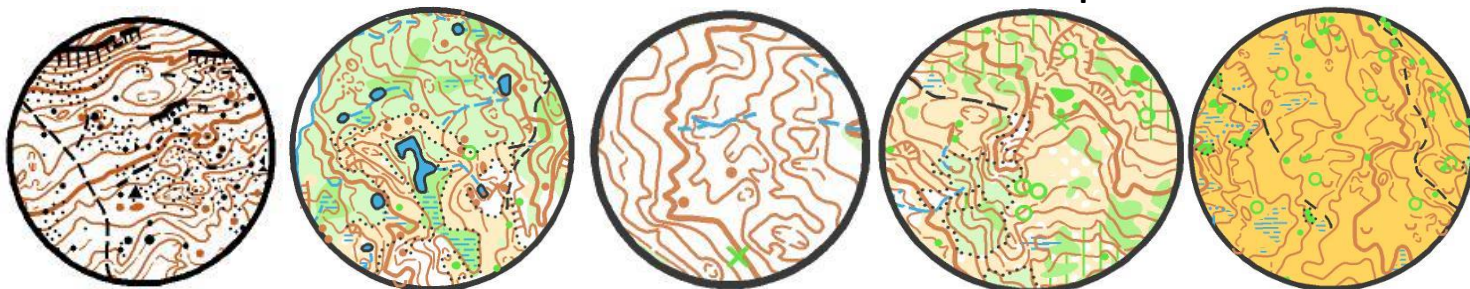


## 3 WRE stages

MD, LD, Sp.U

**All your Orienteering skills  
will turn  
to good account !**

Map samples from  
the previous editions:





# 1. ORGANIZING TEAM

**EVENT PRESIDENT:** Ionuț PATRAȘ,

**President of Romanian Orienteering Federation**

"In the top areas in Romania, Comarnic is just the right location for a great Orienteering event. The host of many national and international events in the past years, Comarnic provided interesting races demanding all Orienteering skills from the competitors. Let us expect again that we will be satisfied by terrains and courses, which will make the best win! Therefore, I welcome all orienteers from abroad. I would like to thank the French Orienteering Federation for accepting to support our event."



**EVENT & RACE DIRECTOR:**

**Lucian GĂLĂȚEANU, race director on previous editions**

"I had the joy that the routes designed in the previous editions received the highest appreciation."



**TECHNICAL DIRECTOR:** Marie-Violaine PALCĂU,  
**National Technical Director of FFCO -**

**Fédération Française de Course d'Orientation**

„Magnificent project, high technical Orienteering,  
nice places, nice people."



**TECHNICAL DIRECTOR:** Valentin-Tiberiu PALCĂU,  
**Race Director O'FRANCE 2021 și 2023**

**Master of sport Orienteering in Romania**

"With emotion and pleasure, I return to Romania, my country of origin, to share my technical experience from two O'France events. I am captivated by the quality and diversity of the terrain in the Prahova Valley. Undoubtedly you will appreciate the competition. You are welcome!"



**CARTOGRAPHER:** Liviu ȚÂNȚAR,  
**mapping at JWOC 2023, România**

"I am happy to be part of this beautiful project, Carpathian O Trophy 2025, where I had the pleasure to map technical areas, with framed relief and a very varied diversity of vegetation which I am sure they will demand the qualities of the competitors to the maximum."



**CONTROL:** Nina MAIORESCU – National Controller  
Gabi MAIORESCU – IOF Adviser

"Really, high competency  
and exigency"

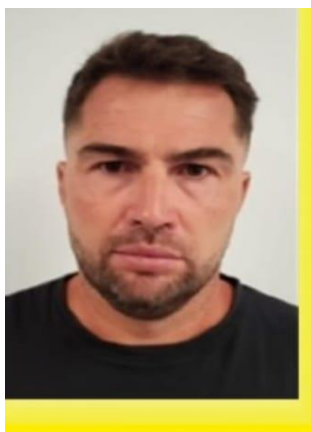




**ENTRIES,  
VALIDATION,  
START LISTS,  
RESULTS:**  
George NEAGU



**ELECTRONIC  
RESULTS  
DISPLAY:**  
Tamaş BOGYA



**FINISH  
ARENAS:**  
Ciprian POPA

**START  
DEVICES:**  
Maria NEGOIȚĂ



**PLACING the CONTROL POINTS: The "7 MAGNIFICENTS"**



**Iuli  
NEGOIȚĂ**



**Costică  
BULGARU**



**Florin  
ȚUNCU**



**Cosmin  
GEORGESCU**



**Răzvan  
LUPA**



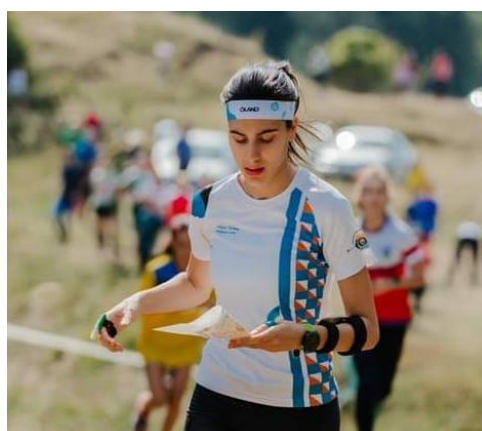
**Tiberiu  
ȚIȚIRIGĂ**



**Radu MILEA  
PURUHNIUC**



**WEBSITE  
ADMINISTRATION:**  
Gabi SABOU



**PROMOTION  
and MARKETING:**  
Daria GĂLĂȚEANU



**PROMOTION  
and ONLINE COMMUNICATION:**  
Adela GĂLĂȚEANU

## 2. OUR HOSTS



**Mr. Sorin Nicolae POPA, MAYOR of COMARNIC TOWN:**

"Comarnic has the privilege to be once again the host of major sport competitions with national and international participation, and this honors us and makes us happy. Here, in Comarnic, we have a wonderful landscape at the disposal of our guests: athletes, coaches, orienteering specialists, in order to organize an elite competition. We thank the Romanian Orienteering Federation for choosing us once again, in 2025, as the venue for such an important competition for us and for the Romanian sports community!"

**Mr. Cristian NEAGOE, MAYOR of TALEA COMMUNE:**

"We welcome our guests to this competition in which two stages will take place in the hills surrounding the commune of Talea. We are convinced that the beauty of our landscapes will remain unforgettable in the memory of all participants."



**Mr. Bogdan Cristian NOVAC, MAYOR of BREAZA TOWN:**

"We are pleased and honored that Breaza town is hosting this national and international orienteering world ranking competition. We offer the students of Breaza the opportunity to discover the beauty of this sport by organizing Breaza Town Cup for them."



## 3. OUR SPONSORS



**GHM TEAM**

**TRUE ATTITUDE  
@decorporate®**

**INGKA™  
INVESTMENTS**



**Mihnea Grecu:**

"I am glad to support this competition. Orienteering has educated me, and continues to complete and define who I am today!"



**Horațiu Grecu:**

"Together we can develop both competitions and new generations of athletes."



**Cosmin Morar:**

"My years in orienteering have left a lasting mark on everything that followed. From a young age, we learned the meaning of hard work, and the drive to push beyond our own limits."

### **Message for new sponsors**

We want to have you on our side for the successful realization of this sport event that will gather passionate participants from all over the country and abroad.

The presence of your brand on all competition materials will give you visibility in an active and involved community.



## 4. EVENT PROGRAM

**August 20<sup>th</sup>,  
Model Event,  
Comarnic**

12:30 - 17:00  
12:30 – 18:00

Validation at Model Event Centre,  
Model Event: Gurguiata cluster of control

**August 21<sup>st</sup>,  
Model Event,  
Comarnic**

9:30 – 11:00  
9:30 – 12:00

Validation at Model Event Centre,  
Model Event: Ghiosesti (Belia Valley)  
cluster of control

**August 21<sup>st</sup>,  
MD, WRE,  
Talea**

14:30 – 15:30  
16:00

Validation at Event Centre,  
First start MD

**August 22<sup>nd</sup>,  
LD, WRE,  
Talea**

10:00  
13:30

First start LD  
Price Giving Ceremony:  
- MD & LD WRE stages  
- MD & LD National Championships

**August 23<sup>rd</sup>,  
Orienteering  
Celebration Day,  
Relay & MD,  
Comarnic**

10:00  
13:30  
13:00 - 15:30

First start Relay  
Relay & MD Price Giving Ceremony  
Picnic, accompanied by a music  
and dancing show

**August 24<sup>th</sup>,  
Urban Sprint,  
WRE,  
Breaza Town Cup,  
Breaza**

9 : 30  
10:00  
13:30

Quarantine , “Virgil Dudău” Sport Hall,  
First start Urban Sprint  
Price Giving Ceremony:  
- Urban Sprint Nat. Champ. & WRE,  
- Carpathian Orienteering Trophy,  
- Breaza Town Cup

# 5. DETAILS for EVENT STAGES

## Model Event, August 20<sup>th</sup> & 21<sup>st</sup>, Comarnic

Model Event Center has the coordinates: **45° 15' 00" 25° 36' 17"** .

Model Event Center is located next to the paved road, 250m from its exit from the inhabited area of Comarnic, Ghioșești district.

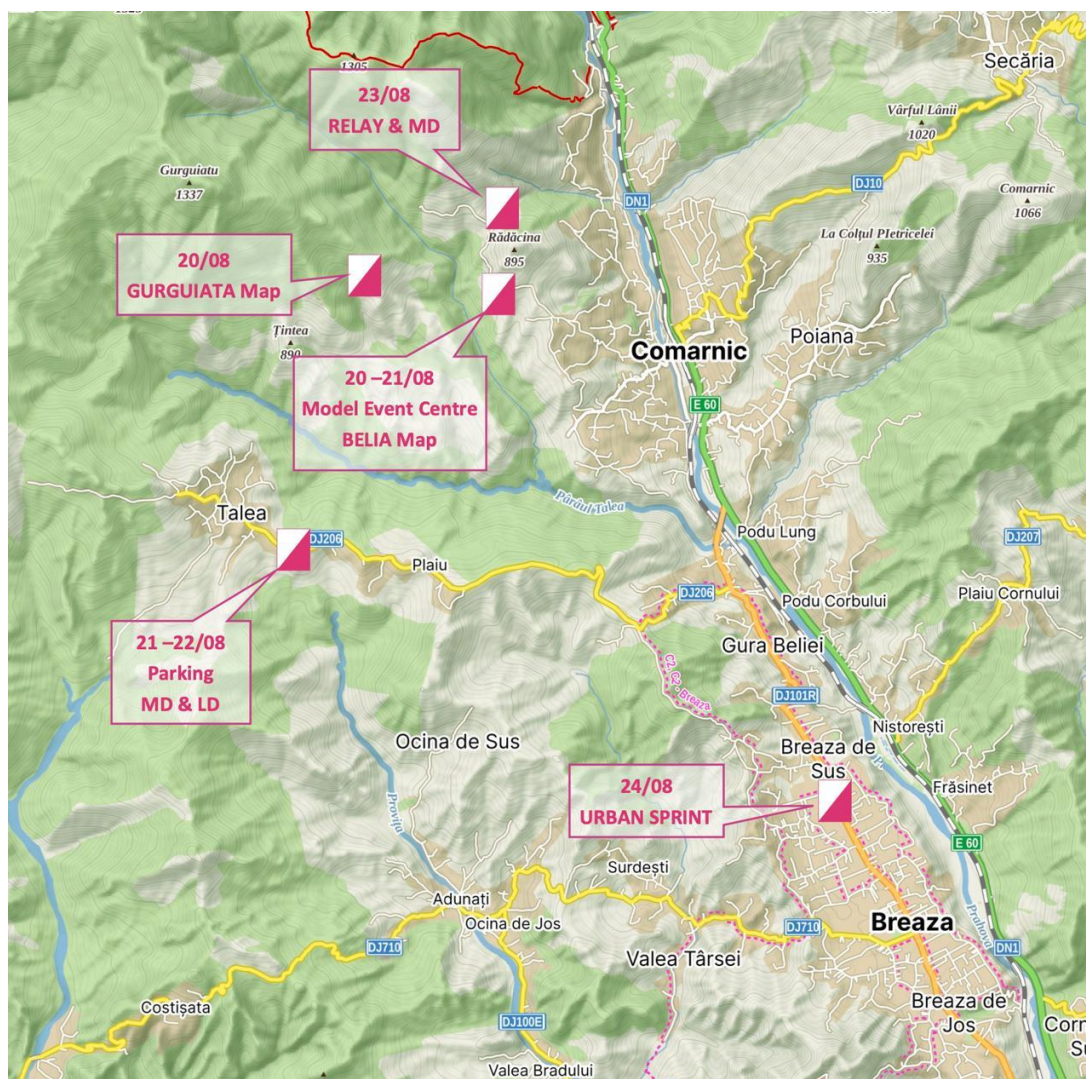
**You have the opportunity to admire a particularly beautiful landscape opening to the hills to the south and to the west.**

Parking is available along the road.

On August 20<sup>th</sup>, from 12:30 to 18:00, there will be installed controls at the Gurguiata area.

To enter the Gurguiata area from the Model Event Centre you have to drive 4,3 km on the Gurguiata forest road until the point: **45° 15' 08,3" 25° 34' 50"** . On the route, after 3,9 km, at the point "At the Cross", ( **45° 15' 04,6" 25° 35' 09"**), please take a short break **to admire the marvelous landscape that opens to the south.**

On August 21<sup>st</sup>, from 9:30 to 12:00, the Ghiosesti / Belia Valley cluster of controls will be available. The Model Event Centre is located on the Belia Valley map.



## MD, WRE, August 21<sup>st</sup>, Talea

The Parking area is located next to the paved road, at the entrance to Talea Commune and has coordinates: **45° 13' 15" 25° 34' 28"**.

We recommend to the participants of the competition that on the access road to Talea Commune, after leaving the inhabited area of Breaza Town, **to stop several times to admire the landscape of outstanding beauty, both towards the hills to the south and the mountains to the north.**

The Competition Center is located at the Finish Arena, 150m from the Parking area.  
The start is 400m from the Parking area or 300m from the Competition Center & Finish Arena.

## LD, WRE, August 22<sup>nd</sup>, Talea

Parking, Finish Arena and Event Center remain the same as the previous day.

There will be two starts:

Start 1 - for classes: M,W 18,20,21E,21A,35,40,45, M16,50,55,

Start 2 - for classes: M,W 12,14,60,65,70,75, W 16,50,55, M80, Open Th., Open, Open Family

Start 1 is 2.8 km from the parking area, of which 2.3 km will be covered by minibuses provided by the organizers and 500m will be covered by foot, along a marked lane.

Start 2 will be 600m from the parking area, along a marked lane.

The prize giving ceremony will take place in the finish area.

## Relay & MD, August 23<sup>rd</sup>, Comarnic

The Relay & MD Arena has the coordinates: **45° 15' 26" 25° 36' 14"**.

The Arena is located at the beginning of the Gurguiata forest road, 1.150 m from the exit of the paved road from the inhabited area of Comarnic, Ghioșești district.

Parking is along this paved road. Wider areas suitable for parking coaches and minibuses will be marked.

The prize giving ceremony will take place in the area of the Relay & MD Arena.



**We invite you to join us for a great picnic at the Relay & MD Arena, where our hosts will provide us with dinning conditions and some delicious local dishes.**

**The talented students from Comarnic will delight us with beautiful songs and dances.**

**It will be a real Orienteering Celebrating Day where participants will have a wonderful opportunity to connect with fellow participants and celebrate the spirit of Orienteering. Celebrating Orienteering during the national and international competitions held in Comarnic - always in an unforgettable atmosphere - has become a cherished and meaningful tradition. So, don't miss it!**



## 🇷🇪 Urban Sprint, WRE, August 24<sup>th</sup>, Breaza

Parking for the Urban Sprint stage is on Vasile Alecsandri and Copenhagen streets. The intersection of these two streets has the coordinates: **45° 10' 48" 25° 40' 11"**.

From this point, a marked lane starts towards the quarantine zone which is established at the "Virgil Dudău" Sports Hall, 400m away.

The Finish Arena is located near the Parking area. The prize giving ceremony will take place in front of the Town Hall, also near the Parking area.

Warm Up maps with CP will be available. The Parking Area, the Finish Area, the Town Hall and the "Virgil Dudău" Sports Hall are on the Warm Up map.



# 6. TECHNICAL DATA

CLASS for Carpathian O-Trophy	MD August, 21 <sup>st</sup>	LD August, 22 <sup>nd</sup>		Urban Sprint August, 24 <sup>th</sup>	
	Length (km) / climb (m) / Number of Controls	Length (km) / climb (m) / Number of Controls	Star t	Length on optimal route/ Number of Controls	CLASS for National Urban Sprint Championship
W 12	2,21/ 90 / 14	2,23 / 90 / 13	S2	1,47 km / 12 CP	W 14
W 14	2,5 / 100 / 16	2,4 / 95 / 15	S2	1,47 km / 12 CP	
W 16	2,9 / 100 / 14	4,23 / 180 / 15	S2	3,36 km / 17 CP	W 18
W 18	3,46 / 130 / 16	6,07 / 200 / 17	S1	3,36 km / 17 CP	
W 20	3,46 / 130 / 16	6,07 / 200 / 17	S1	3,36 km / 17 CP	W 21
W 21E	3,93 / 150 / 18	8,49 / 290 / 24	S1	3,36 km / 17 CP	
W 21A	3,46 / 140 / 16	7,41 / 240 / 24	S1	3,36 km / 17 CP	
W 35	3,46 / 140 / 16	6,07 / 200 / 17	S1	3,36 km / 17 CP	W 35
W 40	3,38 / 135 / 15	5,4 / 190 / 16	S1	3,36 km / 17 CP	
W 45	3,38 / 135 / 15	5,4 / 190 / 16	S1	2,2 km / 15 CP	W 45
W 50	2,9 / 100 / 14	4,23 / 180 / 15	S2	2,2 km / 15 CP	
W 55	2,9 / 100 / 14	4,23 / 180 / 15	S2	2,2 km / 15 CP	W 55
W 60	2,23 / 80 / 12	2,78 / 110 / 15	S2	2,2 km / 15 CP	
W 65	2,23 / 80 / 12	2,78 / 110 / 15	S2	1,41 km / 11 CP	W 65
W 70	1,96 / 60 / 12	1,81 / 70 / 10	S2	1,41 km / 11 CP	
W 75	1,96 / 60 / 12	1,81 / 70 / 10	S2	1,41 km / 11 CP	W 75
M 12	2,3 / 90 / 14	2,5 / 100 / 12	S2	1,96 km / 13 CP	M 14
M 14	2,7 / 105 / 15	2,75 / 110 / 15	S2	1,96 km / 13 CP	
M 16	3,38 / 135 / 15	5,4 / 190 / 16	S1	4,5 km / 20 CP	M 18
M 18	3,93 / 150 / 18	7,41 / 240 / 24	S1	4,5 km / 20 CP	
M 20	3,93 / 150 / 18	7,41 / 240 / 24	S1	4,5 km / 20 CP	M 21
M 21E	4,43 / 170 / 18	10,94 / 380 / 27	S1	4,5 km / 20 CP	
M 21A	3,93 / 150 / 18	8,49 / 290 / 24	S1	4,5 km / 20 CP	
M 35	3,93 / 150 / 18	8,49 / 290 / 24	S1	4,5 km / 20 CP	M 35
M 40	3,46 / 140 / 16	7,41 / 240 / 24	S1	4,5 km / 20 CP	
M 45	3,46 / 140 / 16	6,07 / 200 / 17	S1	3,36 km / 17 CP	M 45
M 50	3,38 / 135 / 15	5,4 / 190 / 16	S1	3,36 km / 17 CP	
M 55	3,38 / 135 / 15	5,4 / 190 / 16	S1	2,2 km / 15 CP	M 55
M 60	2,9 / 100 / 14	4,23 / 180 / 15	S2	2,2 km / 15 CP	
M 65	2,9 / 100 / 14	4,23 / 180 / 15	S2	2,2 km / 15 CP	M 65
M 70	2,23 / 80 / 12	2,78 / 110 / 15	S2	2,2 km / 15 CP	
M 75	2,23 / 80 / 12	2,78 / 110 / 15	S2	1,41 km / 11 CP	M 75
M 80	1,96 / 60 / 12	1,81 / 70 / 10	S2	1,41 km / 11 CP	
Op.Th.	2,9 / 100 / 14	4,22 / 160 / 15	S2	2,23 km / 13 CP	Op.Th.
Open	2,3 / 90 / 14	2,5 / 100 / 12	S2	1,96 km / 13 CP	Open
Op.Fam	2,21 / 90 / 13	2,23 / 90 / 13	S2	1,47 km / 12 CP	Op.Fam



National Relay Championship August, 23 <sup>rd</sup>		MD August, 23 <sup>rd</sup>		Breaza Town Cup Urban Sprint August, 24 <sup>th</sup>	
CLASS	Length / Number of Controls	COURSE (CLASSES)	Length / Number of Controls	CLASS	Length on optimal route/ Number of Controls
W14	3 x 1,9 km / 11 CP	A (M 20,21,35)	3,15 km / 18 CP	W15	1,7 km / 12 CP
W18	3 x 3,0 km / 19 CP		B (W 20,21,35, M 18,40,45)		
W21	3 x 3,3 km / 21 CP				
W120	3 x 2,4 km / 16 CP	C (W 18,40,45, M 16,50,55)	2,73 km / 15 CP	W19	2,1 km / 12 CP
W160	3 x 2,1 km / 14 CP		D (W 16,50,55, M 60,65,Op.Th)		
W190	3 x 2,1 km / 14 CP				
M14	3 x 1,9 km / 11 CP	E (W 60,65, M 70,75)	2,28 km / 14 CP	M15	2,1 km / 12 CP
M18	3 x 3,3 km / 21 CP				
M21	3 x 4,1 km / 23 CP	F (W 70,75, M 80)	2,11 km / 12 CP		
M120	3 x 3,0 km / 19 CP				
M160	3 x 2,4 km / 16 CP	G (W M 12,14, Op, Op.Fam)	2,01 km / 12 CP		
M190	3 x 2,1 km / 14 CP				

Stunning courses designed to test your abilities are waiting for you.  
All your Orienteering skills will turn to good account.  
**So, come to be the best!**

Nice places and wonderful landscapes will delight you.  
**A special leg, on the top of the hills, will offer you a delightful  
panoramic view towards the peaks of Bucegi Mountains,  
Baiului Mountains and Subcarpathians's Hills.**

# 7. ENTRIES, ENTRY FEES, DEADLINES, INFORMATION

## Entry fees and deadlines:

- ✚ For clubs affiliated to the Romanian Orienteering Federation, fees and deadlines are in accordance with the "SPECIFICATIONS 2025".
- ✚ There are no entry fees for the Breaza Town Cup.

CLASSES	DEADLINES			
	Jan, 31 <sup>st</sup>	May, 30 <sup>th</sup> **)	August, 10 <sup>th</sup> ***)	August, 16 <sup>th</sup>
M,W 12,14, Open, Open Family	8 €*) per stage	9 € per stage	10 € per stage	12 € per stage
M,W 16,18,65,70,75, M 80, Op.Th.	10 €*) per stage	12 € per stage	15 € per stage	20 € per stage
M,W 20,21E,21A,35,40,45,50,55,60	12 €*) per stage	15 € per stage	20 € per stage	25 € per stage

\*) For SEEQA countries and Hungary, these levels remain valid for all application deadlines;

\*\*) One month later (than in Bulletin 1), to support those who intend to register in this period.

\*\*\*) One day later (than Bulletin 1), to be the same deadline as for romanian runners.

✚ After 16<sup>th</sup> August, registrations will be accepted according to the available places.

✚ For Model Event maps there is a fee of 3 € / map. Please indicate at the registration whether you are participating in the Model Event and how many maps you want.

✚ Entry is not valid until the entry fee is received in the organizer's account.

**Banking details:** Clubul Sportiv Metropolitan București

Adress: str. Pridvorului nr. 17, Sector 4, Bucharest.

For EUR payments, IBAN: RO76 RNCB 0857 1529 0407 0001

For RON payments, IBAN: RO93 RNCB 0071 1529 0407 0001.

## PARTICIPATION IN THE COMPETITION IS ON OWN RESPONSABILITY

**Entries:** [www.orienteeringonline.net](http://www.orienteeringonline.net) [geotibi2002@yahoo.com](mailto:geotibi2002@yahoo.com)

**Information:** Competition Site: <https://carpatho.ro>

Romanian Orienteering Sites: [www.fro.ro](http://www.fro.ro) [www.orienteering.ro](http://www.orienteering.ro)

International Orienteering Sites: <https://eventor.orienteering.org/Events>  
[www.worldofo.com/calendar](http://www.worldofo.com/calendar)

Facebook link: [www.facebook.com/CarpathianOTrophy](http://www.facebook.com/CarpathianOTrophy)

E-mail address for additional information: [bn.lucian.galateanu@gmail.com](mailto:bn.lucian.galateanu@gmail.com)  
[tibi.palcau@gmail.com](mailto:tibi.palcau@gmail.com)



# 8. WELCOME to ROMANIA

TO REACH THE  
COMPETITION AREA,  
you have 90 km by DN1  
from *Henri Coanda  
International Airport of  
OTOPENI*  
or 80 km from the new  
*Brasov-Ghimbav Airport*

ACCOMMODATION:  
*Guesthouses and hotels in  
Breaza, Talea or Comarnic*



## TRY ON BEAUTIFUL TOURISTIC TOURS

You can stop by  
a short visit to  
*Peles Castle  
(1873- 1914),  
the Summer Royal  
Family Residence,  
at Sinaia,  
about 20 km North  
from Comarnic.*



**Baroque room**



**Florentine room**